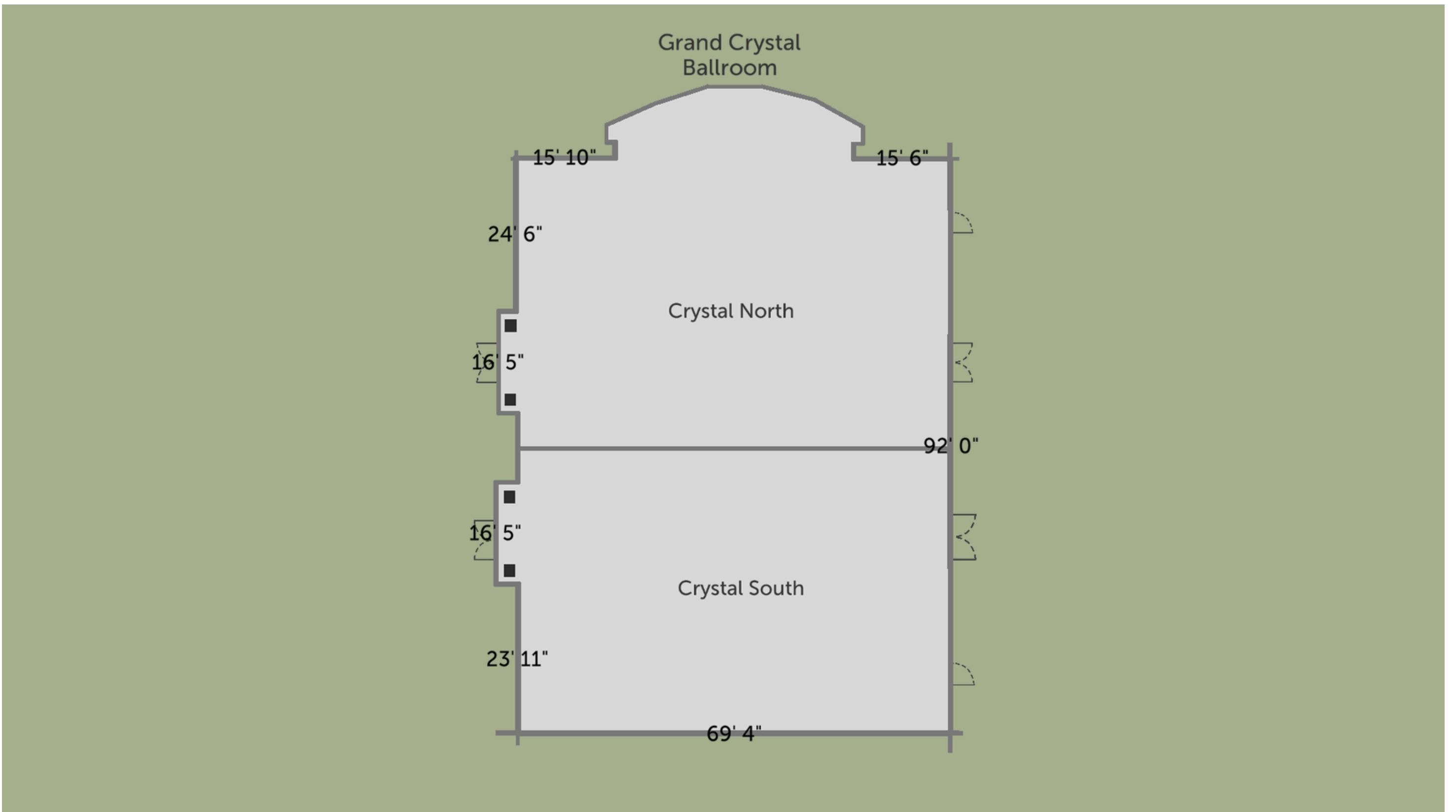
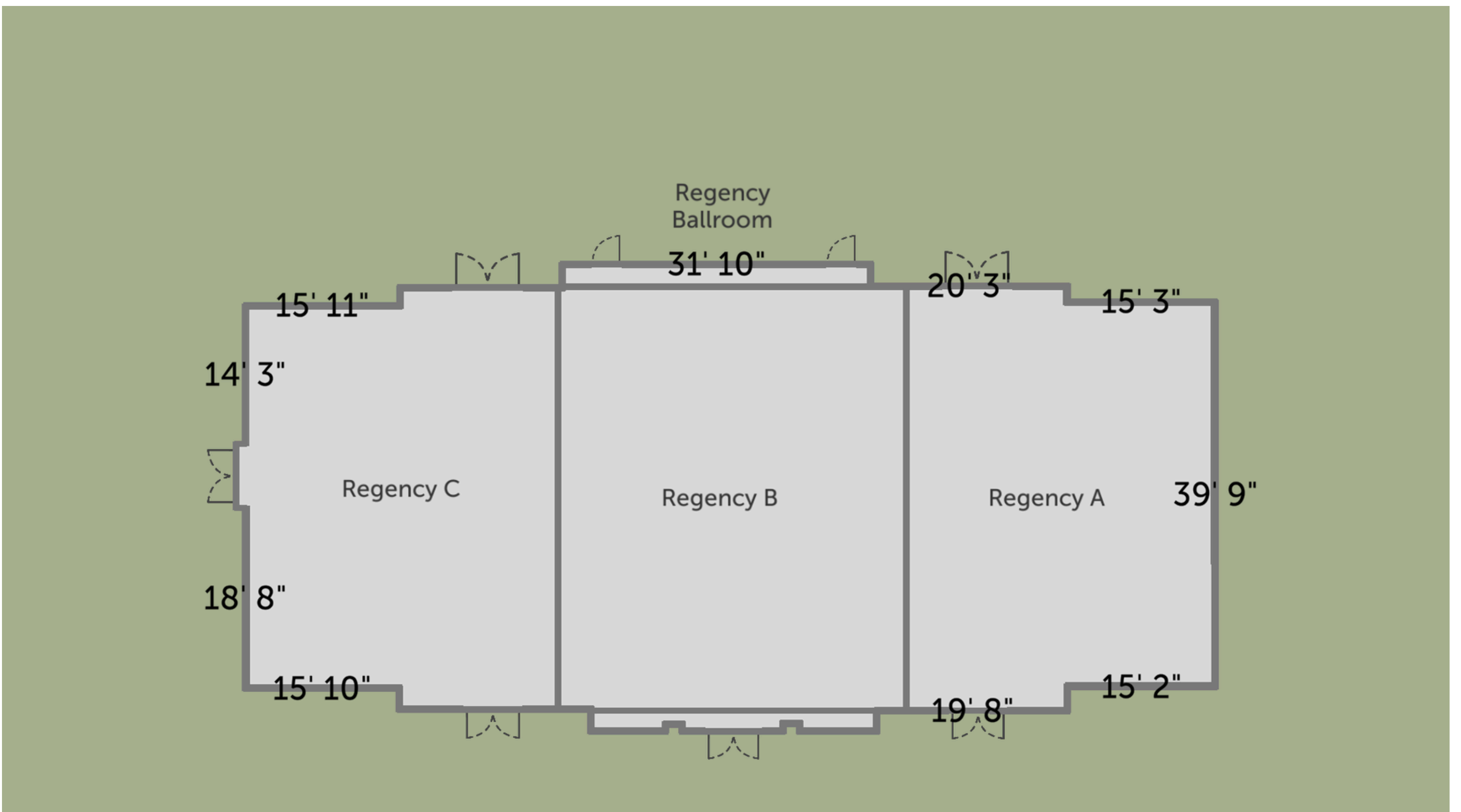


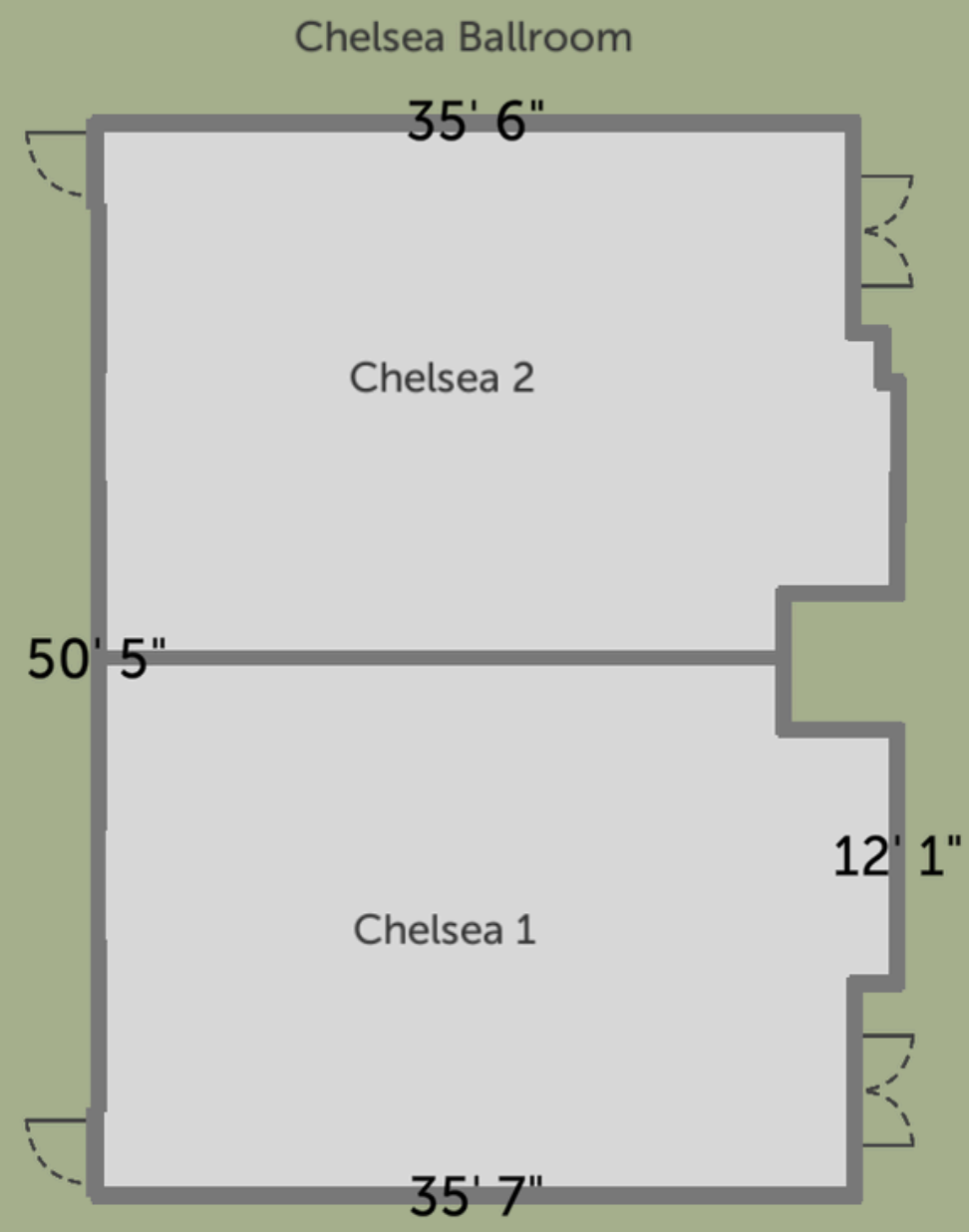
Grand Crystal Ballroom



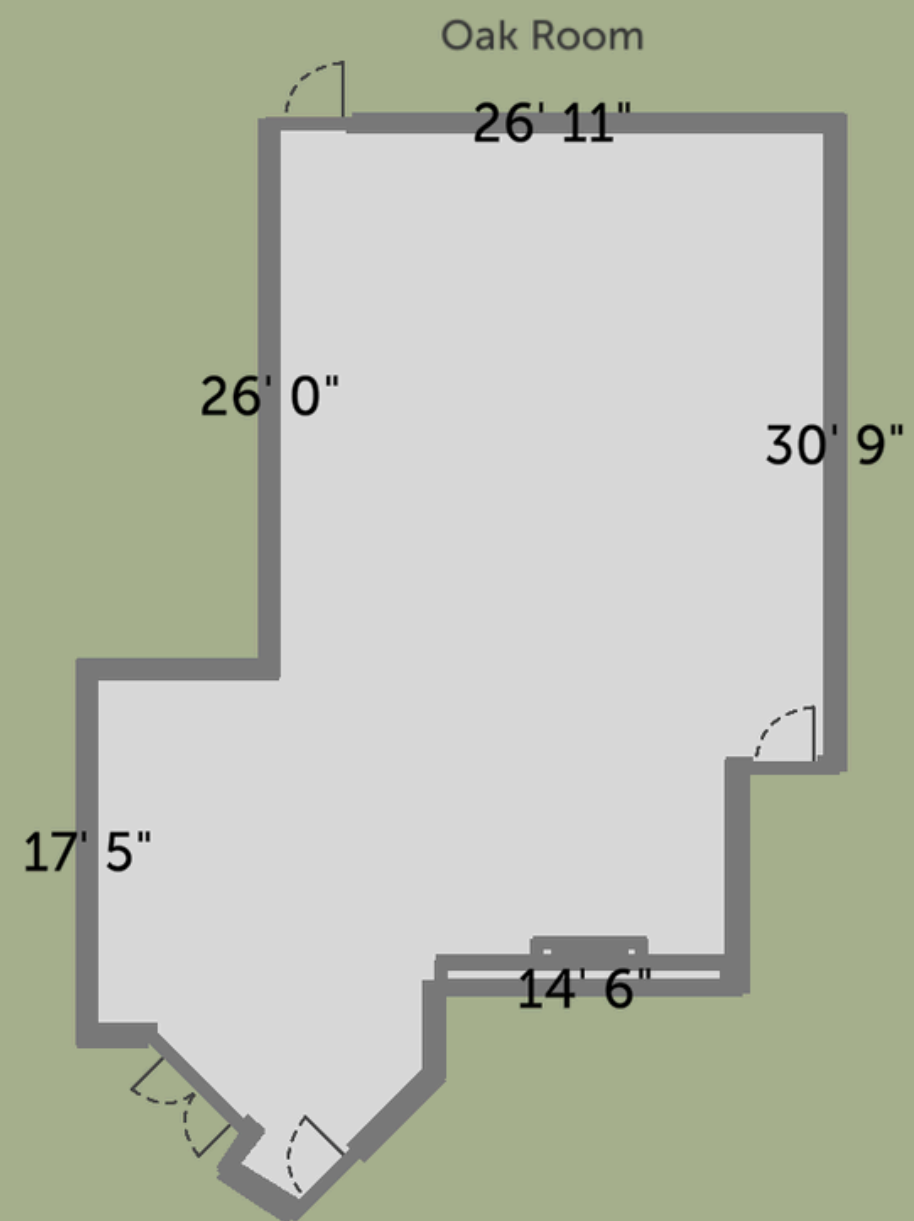
Regency Ballroom



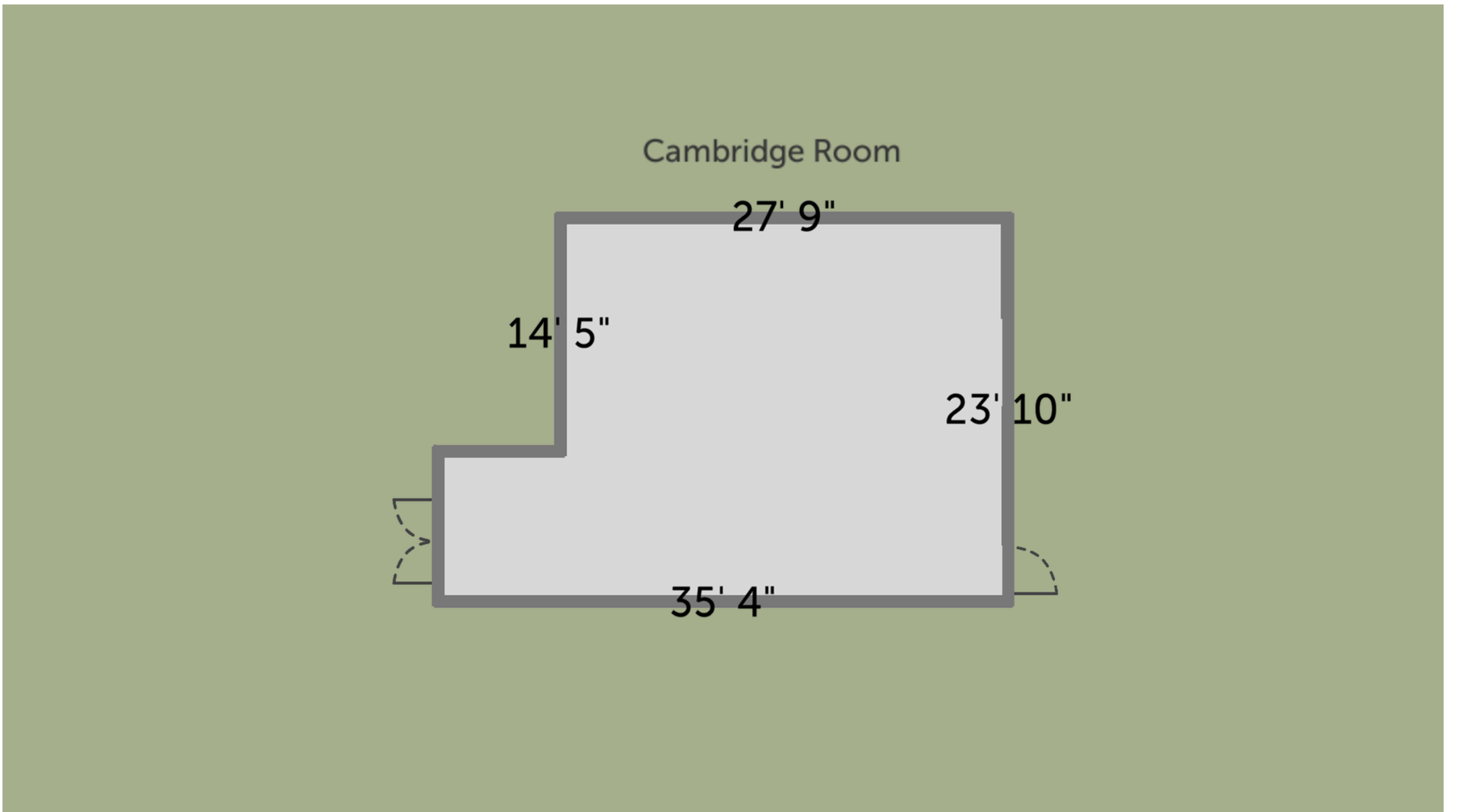
Chelsea Ballroom



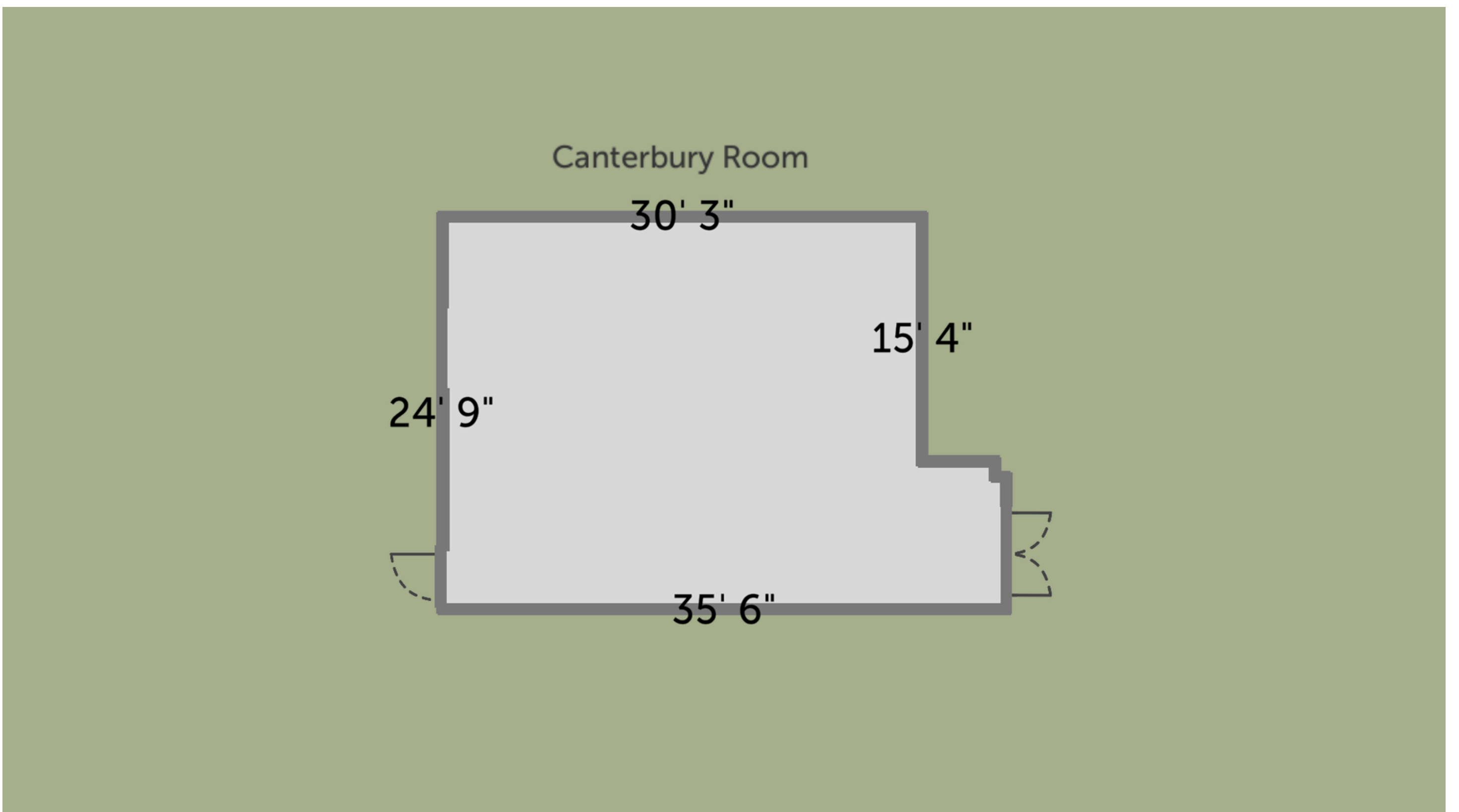
Oak Room



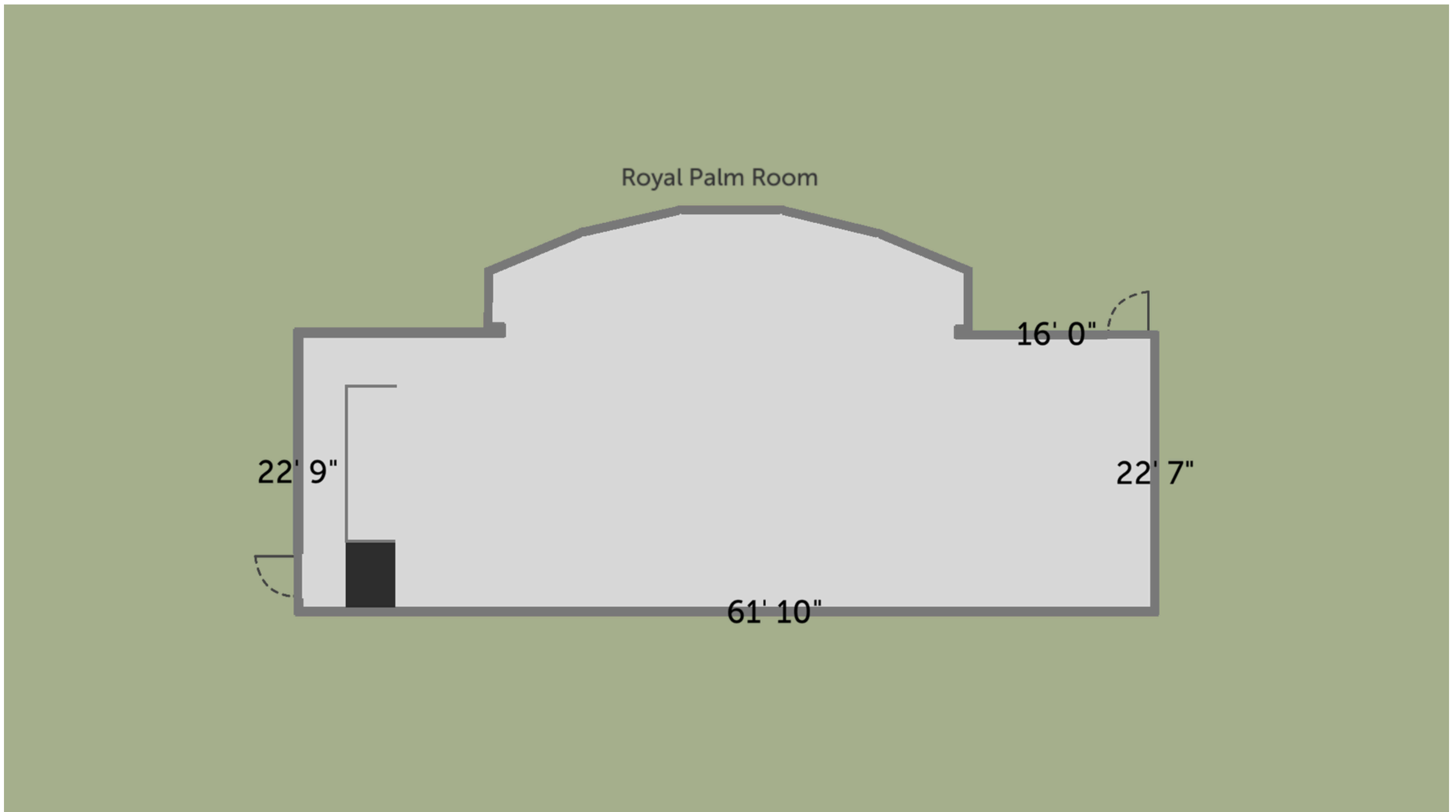
Cambridge Room



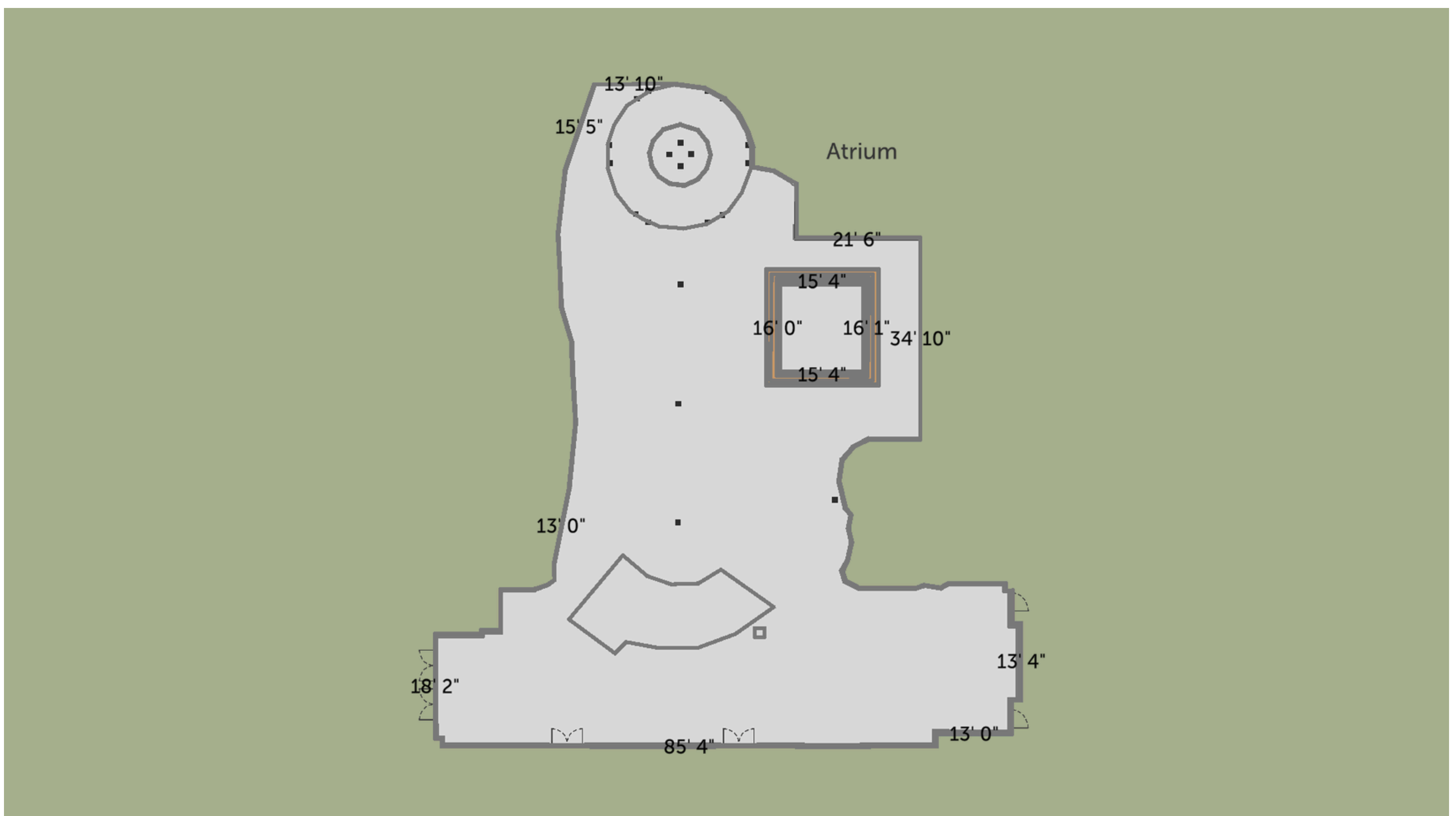
Canterbury Room



Royal Palm Room



Atrium



Please Note: Floor plans are provided for reference purposes. Key Largo, Sandpiper, and the Summit Oval Office are relatively smaller rooms with limited flexibility for alternative setups. As such, configuration options for these spaces are not included in this file.

For more information or assistance with setup options, please contact the Sales Department.